

# City Parks & Trails

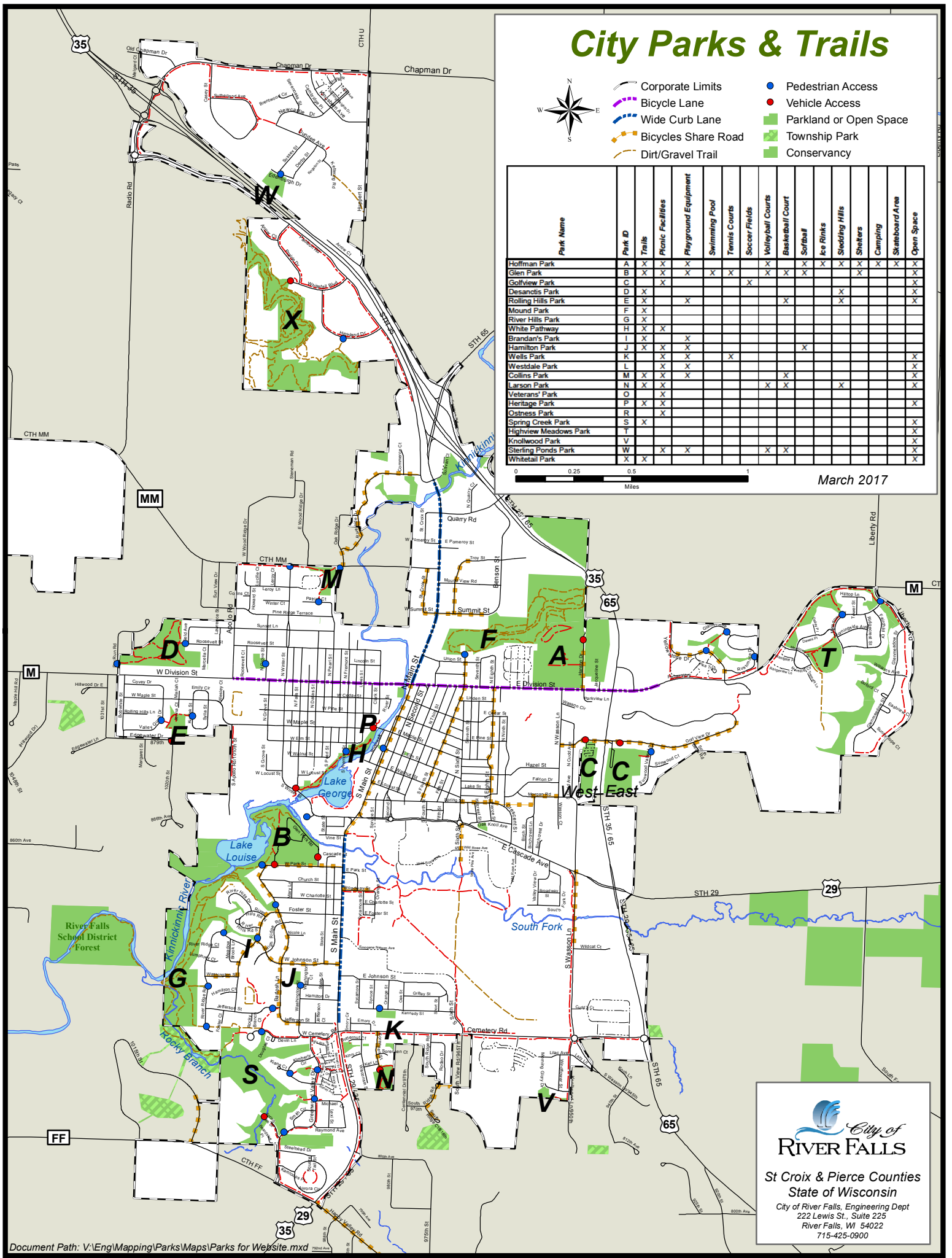


- Corporate Limits
- Bicycle Lane
- Wide Curb Lane
- Bicycles Share Road
- Dirt/Gravel Trail
- Pedestrian Access
- Vehicle Access
- Parkland or Open Space
- Township Park
- Conservancy

Park Name	Park ID	Trails	Picnic Facilities	Playground Equipment	Swimming Pool	Tennis Courts	Soccer Fields	Volleyball Courts	Basketball Court	Softball	Ice Rinks	Stedding Hills	Shelters	Camping	Skateboard Area	Open Space
Hoffman Park	A	X	X	X				X	X	X	X	X	X	X	X	X
Glen Park	B	X	X	X	X	X										X
Golfview Park	C	X	X				X									X
Desanctis Park	D	X											X			X
Rolling Hills Park	E	X		X					X				X			X
Mound Park	F	X														X
River Hills Park	G	X														X
White Pathway	H	X	X													X
Brandan's Park	I	X		X												X
Hamilton Park	J	X	X	X						X						X
Wells Park	K	X	X	X	X											X
Westdale Park	L	X	X	X												X
Collins Park	M	X	X	X					X	X						X
Larson Park	N	X	X	X				X	X			X				X
Veterans' Park	O	X	X													X
Heritage Park	P	X	X													X
Gainess Park	R	X	X													X
Spring Creek Park	S	X	X													X
Highway Meadows Park	T															X
Knollwood Park	V															X
Sterling Ponds Park	W	X	X	X				X	X							X
Whitetail Park	X	X														X



March 2017



**City of RIVER FALLS**  
 St Croix & Pierce Counties  
 State of Wisconsin  
 City of River Falls, Engineering Dept  
 222 Lewis St., Suite 225  
 River Falls, WI 54022  
 715-425-0900